

BYLAW NO. 5598
ZONING AMENDMENT BYLAW, 2019 (3)

=====

THE COUNCIL OF THE CITY OF MOOSE JAW ENACTS AS FOLLOWS:

- 1 Bylaw No. 5346, Zoning Bylaw of the City of Moose Jaw is amended in the manner set forth in this Bylaw.
- 2 The SE Quadrant Zoning Map in section 12 is amended by rezoning the land labelled as area "C" on the Plan of Proposed Subdivision prepared by Malcolm Vanstone SLS, dated August 21, 2019 from UH – Urban Holding District, to R1 – Large Lot Low Density Residential District, as described and illustrated in Appendix A and B attached to this bylaw.
- 3 This Bylaw comes into force on the day of passage.

READ A FIRST TIME -----

READ A SECOND TIME -----

READ A THIRD TIME AND PASSED -----

MAYOR

CITY CLERK

Appendix A

PLAN OF PROPOSED SUBDIVISION OF ALL OF

LOTS 1 to 19, BLOCK 29, PLAN N1015
 LOTS 1 to 19, BLOCK 30, PLAN N1015
 LOTS 1 to 19, BLOCK 31, PLAN N1015
 LOTS 1 to 19, BLOCK 32, PLAN N1015
 LOTS 1 to 19, BLOCK 33, PLAN N1015
 LOTS 7 to 19, BLOCK 34, PLAN N1015
 LOTS 1 to 18, BLOCK 35, PLAN N1015
 LOTS 1 to 18, BLOCK 36, PLAN N1015
 LOTS 1 to 18, BLOCK 37, PLAN N1015
 LOTS 1 to 18, BLOCK 38, PLAN N1015
 LOTS 1 to 18, BLOCK 39, PLAN N1015
 LOTS 1 to 18, BLOCK 40, PLAN N1015
 LOTS 1 to 18, BLOCK 41, PLAN N1015
 LOTS 1 to 18, BLOCK 42, PLAN N1015
 LOTS 1 to 18, BLOCK 43, PLAN N1015
 LOTS 1 to 18, BLOCK 44, PLAN N1015
 LOTS 1 to 18, BLOCK 45, PLAN N1015
 LOTS 1 to 18, BLOCK 46, PLAN N1015
 LOTS 1 to 18, BLOCK 47, PLAN N1015
 LOTS 1 to 18, BLOCK 48, PLAN N1015
 LOTS 1 to 18, BLOCK 49, PLAN N1015
 LOTS 1 to 18, BLOCK 50, PLAN N1015
 LOTS 1 to 18, BLOCK 51, PLAN N1015
 LOTS 1 to 18, BLOCK 52, PLAN N1015
 LOTS 1 to 18, BLOCK 53, PLAN N1015
 LOTS 1 to 18, BLOCK 54, PLAN N1015
 LOTS 1 to 18, BLOCK 55, PLAN N1015
 LOTS 1 to 18, BLOCK 56, PLAN N1015
 LOTS 1 to 18, BLOCK 57, PLAN N1015
 LOTS 1 to 18, BLOCK 58, PLAN N1015
 LOTS 1 to 18, BLOCK 59, PLAN N1015
 LOTS 1 to 18, BLOCK 60, PLAN N1015
 LOTS 1 to 18, BLOCK 61, PLAN N1015
 LOTS 1 to 10 & 16 to 19, BLOCK 62, PLAN N1015
 LOT 21, BLOCK 62, PLAN 10190909
 LOTS 1 to 9 & 16 to 19, BLOCK 63, PLAN N1015
 LOTS 20 & 21, BLOCK 63, PLAN 10190909
 LOTS 1 to 9 & 16 to 19, BLOCK 64, PLAN N1015
 LOTS 20 & 21, BLOCK 64, PLAN 10190831
 LOTS 1 to 9 & 16 to 19, BLOCK 65, PLAN N1015
 LOTS 20 & 21, BLOCK 65, PLAN 10190886
 LOTS 1 to 9 & 16 to 19, BLOCK 66, PLAN N1015
 LOTS 20 & 21, BLOCK 66, PLAN 10190831
 LOTS 1 to 9 & 16 to 19, BLOCK 67, PLAN N1015
 LOTS 20 & 21, BLOCK 67, PLAN 10190853
 LOTS 1 to 9 & 16 to 19, BLOCK 68, PLAN N1015
 LOTS 20 & 21, BLOCK 68, PLAN 10190831
 LOTS 1 to 9 & 16 to 19, BLOCK 69, PLAN N1015
 LOTS 20 & 21, BLOCK 69, PLAN 10190842
 LOTS 1 to 9 & 16 to 19, BLOCK 70, PLAN N1015
 LOT 20, BLOCK 70, PLAN 10190864
 LOT 21, BLOCK 70, PLAN 10190831
 AND
 SW 1/4 to SW 3/4 Inclusive, PLAN N1015
 Part of SW 3/4, PLAN N1015
 SW 3/4 to SW 1/4 Inclusive, PLAN N1015
 SW 1/4 to SW 1/2 Inclusive, PLAN N1015
 SW 1/2 to SW 3/4 Inclusive, PLAN N1015
 WITHIN
 NW 1/4 & SW 1/4 SECTION 27

OWNER: CITY OF MOOSE JAW

COMMUNITY PLANNING

Dated at Regina in the Province of
 Saskatchewan this 21st day of August, 2019

[Signature]
 Saskatchewan Land Surveyor



Phone: 306-569-2020
 Fax: 306-569-2028
 Regina, SK
 www.2020geomatics.com

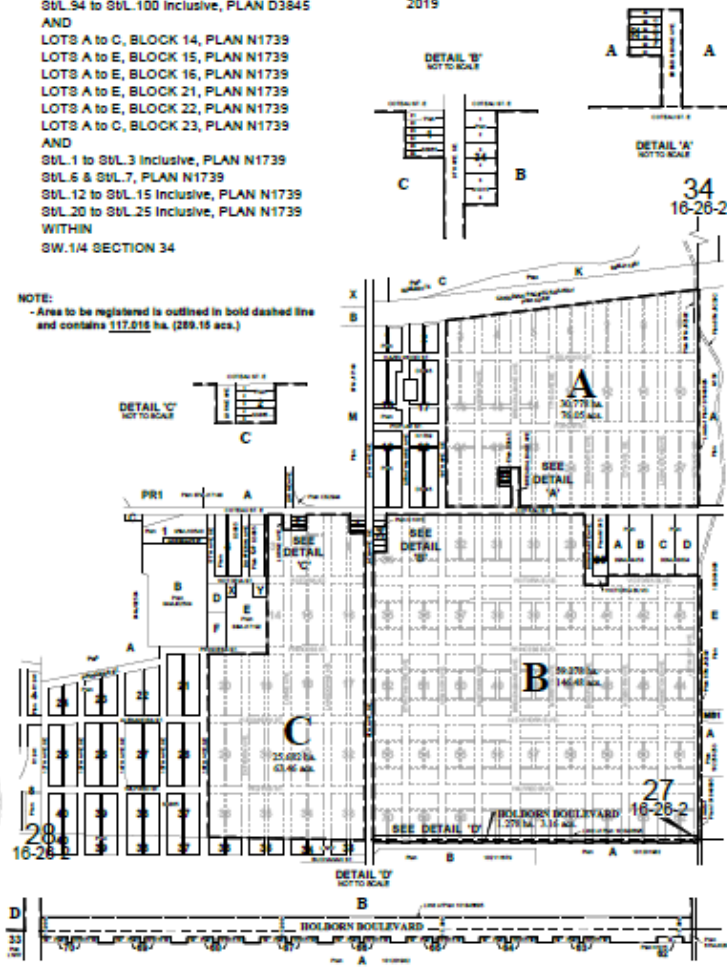
Drawn by: JBN Scale: 1:10,000 Project No.: 12580
 Preliminary Survey: N/A
 Rev #1 - Amended Proposed Street Name - Sept. 3, 2019

LOTS 1 to 20, BLOCK 3, PLAN D3845
 LOTS 1 to 24, BLOCK 4, PLAN D3845
 LOTS 1 to 26, BLOCK 5, PLAN D3845
 LOTS 1 to 30, BLOCK 6, PLAN D3845
 LOTS 1 to 32, BLOCK 7, PLAN D3845
 LOTS 1 to 36, BLOCK 8, PLAN D3845
 LOTS 1 to 38, BLOCK 9, PLAN D3845
 LOTS 1 to 40, BLOCK 10, PLAN D3845
 LOTS 1 to 40, BLOCK 11, PLAN D3845
 LOTS 1 to 40, BLOCK 12, PLAN D3845
 LOTS 1 to 40, BLOCK 13, PLAN D3845
 LOTS 1 to 14 & 21 to 40, BLOCK 14, PLAN D3845
 LOTS 1 to 14 & 27 to 40, BLOCK 15, PLAN D3845
 LOTS 1 to 14 & 27 to 40, BLOCK 16, PLAN D3845
 LOTS 7 to 42, BLOCK 21, PLAN D3845
 LOTS 7 to 30 & 37 to 42, BLOCK 22, PLAN D3845
 LOTS 7 to 48, BLOCK 23, PLAN D3845
 LOTS 1 to 48, BLOCK 24, PLAN D3845
 LOTS 1 to 48, BLOCK 25, PLAN D3845
 LOTS 1 to 48, BLOCK 26, PLAN D3845
 LOTS 1 to 48, BLOCK 27, PLAN D3845
 AND
 SW 1/4, PLAN D3845
 SW 1/2 to SW 3/4 Inclusive, PLAN D3845
 SW 3/4 to SW 1/2 Inclusive, PLAN D3845
 SW 1/2 to SW 1/4 Inclusive, PLAN D3845
 SW 1/4 to SW 1/2 Inclusive, PLAN D3845
 SW 1/2 to SW 3/4 Inclusive, PLAN D3845
 SW 3/4 to SW 1/2 Inclusive, PLAN D3845
 SW 1/2 to SW 1/4 Inclusive, PLAN D3845
 SW 1/4 to SW 1/2 Inclusive, PLAN D3845
 SW 1/2 to SW 3/4 Inclusive, PLAN D3845
 SW 3/4 to SW 1/2 Inclusive, PLAN D3845
 SW 1/2 to SW 1/4 Inclusive, PLAN D3845
 SW 1/4 to SW 1/2 Inclusive, PLAN D3845
 AND
 LOTS A to C, BLOCK 14, PLAN N1739
 LOTS A to E, BLOCK 15, PLAN N1739
 LOTS A to E, BLOCK 16, PLAN N1739
 LOTS A to E, BLOCK 21, PLAN N1739
 LOTS A to E, BLOCK 22, PLAN N1739
 LOTS A to C, BLOCK 23, PLAN N1739
 AND
 SW 1/4 to SW 3/4 Inclusive, PLAN N1739
 SW 3/4 to SW 1/2 Inclusive, PLAN N1739
 SW 1/2 to SW 1/4 Inclusive, PLAN N1739
 SW 1/4 to SW 1/2 Inclusive, PLAN N1739
 WITHIN
 SW 1/4 SECTION 34

LOTS 1 to 20 & 27 to 40, BLOCK 1, PLAN D3865
 LOTS 6 to 40, BLOCK 2, PLAN D3865
 LOT 41, BLOCK 2, PLAN 101971571
 LOTS 21 to 40, BLOCK 3, PLAN D3865
 LOTS 21 to 40, BLOCK 14, PLAN D3865
 LOTS 1 to 40, BLOCK 15, PLAN D3865
 LOTS 1 to 40, BLOCK 16, PLAN D3865
 LOTS 1 to 40, BLOCK 17, PLAN D3865
 LOTS 1 to 40, BLOCK 18, PLAN D3865
 LOTS 1 to 40, BLOCK 19, PLAN D3865
 LOTS 1 to 40, BLOCK 20, PLAN D3865
 LOTS 1 to 40, BLOCK 29, PLAN D3865
 LOTS 1 to 40, BLOCK 30, PLAN D3865
 LOTS 1 to 40, BLOCK 31, PLAN D3865
 LOTS 1 to 40, BLOCK 32, PLAN D3865
 LOTS 1 to 30, BLOCK 33, PLAN D3865
 LOTS 1 to 28, BLOCK 34, PLAN D3865
 LOTS 1 to 28, BLOCK 35, PLAN D3865
 LOTS 1 to 28, BLOCK 36, PLAN D3865
 AND
 SW 1/4 to SW 3/4 Inclusive, PLAN D3865
 SW 3/4 to SW 1/2 Inclusive, PLAN D3865
 Part of SW 1/2, PLAN D3865
 SW 1/2 to SW 1/4 Inclusive, PLAN D3865
 Part of SW 1/2, PLAN D3865
 Part of SW 1/2, PLAN D3865
 SW 1/2 to SW 3/4 Inclusive, PLAN D3865
 SW 3/4 to SW 1/2 Inclusive, PLAN D3865
 SW 1/2 to SW 1/4 Inclusive, PLAN D3865
 SW 1/4 to SW 1/2 Inclusive, PLAN D3865
 SW 1/2 to SW 3/4 Inclusive, PLAN D3865
 SW 3/4 to SW 1/2 Inclusive, PLAN D3865
 SW 1/2 to SW 1/4 Inclusive, PLAN D3865
 SW 1/4 to SW 1/2 Inclusive, PLAN D3865
 WITHIN
 NE 1/4 SECTION 28

All in TWP. 16 - RGE. 26 - W. 2 Mer.
 MOOSE JAW, SASKATCHEWAN
 M.M. VANSTONE, S.L.S.
 2019

NOTE:
 - Area to be registered is outlined in bold dashed line
 and contains 117.016 ha. (289.15 acs.)



Appendix B

Proposed Property Rezoning - Coteau St. E.

